

Please check the examination details below before entering your candidate information

Candidate surname

Other names

Centre Number

Candidate Number

--	--	--	--	--

--	--	--	--	--

Pearson Edexcel Level 3 GCE

Paper
reference

9MA0/32

Mathematics

Advanced

PAPER 32: Mechanics

You must have:

Mathematical Formulae and Statistical Tables (Green), calculator

Total Marks

Candidates may use any calculator allowed by Pearson regulations. Calculators must not have the facility for symbolic algebra manipulation, differentiation and integration, or have retrievable mathematical formulae stored in them.

Instructions

- Use **black** ink or ball-point pen.
- If pencil is used for diagrams/sketches/graphs it must be dark (HB or B).
- **Fill in the boxes** at the top of this page with your name, centre number and candidate number.
- Answer **all** questions and ensure that your answers to parts of questions are clearly labelled.
- Answer the questions in the spaces provided
– *there may be more space than you need.*
- You should show sufficient working to make your methods clear. Answers without working may not gain full credit.
- Unless otherwise indicated, whenever a value of g is required, take $g = 9.8 \text{ m s}^{-2}$ and give your answer to either 2 significant figures or 3 significant figures.

Information

- A booklet 'Mathematical Formulae and Statistical Tables' is provided.
- The total mark for this part of the examination is 50. There are 5 questions.
- The marks for **each** question are shown in brackets
– *use this as a guide as to how much time to spend on each question.*

Advice

- Read each question carefully before you start to answer it.
- Try to answer every question.
- Check your answers if you have time at the end.

Turn over ►

P72131A

©2022 Pearson Education Ltd.

Q:1/1/1/1/



Pearson

1. [In this question, position vectors are given relative to a fixed origin.]

At time t seconds, where $t > 0$, a particle P has velocity \mathbf{v} ms^{-1} where

$$\mathbf{v} = 3t^2\mathbf{i} - 6t^{\frac{1}{2}}\mathbf{j}$$

(a) Find the speed of P at time $t = 2$ seconds.

(2)

(b) Find an expression, in terms of t , \mathbf{i} and \mathbf{j} , for the acceleration of P at time t seconds, where $t > 0$

(2)

At time $t = 4$ seconds, the position vector of P is $(\mathbf{i} - 4\mathbf{j})$ m.

(c) Find the position vector of P at time $t = 1$ second.

(4)

a) at $t=2$ $\mathbf{v} = 12\mathbf{i} - 6\sqrt{2}\mathbf{j}$ speed = $\sqrt{12^2 + (6\sqrt{2})^2}$
 $= \sqrt{144 + 72}$
 $= \sqrt{216}$
 $= 6\sqrt{6} \text{ ms}^{-1}$

b)
 $\mathbf{a} = \frac{d\mathbf{v}}{dt} = 6t\mathbf{i} - 3t^{-\frac{1}{2}}\mathbf{j}$

$$\mathbf{a} = 6t\mathbf{i} - \frac{3}{\sqrt{t}}\mathbf{j} \text{ ms}^{-2}$$

c)
 $\mathbf{s} = \int 3t^2\mathbf{i} - 6t^{\frac{1}{2}}\mathbf{j} = t^3\mathbf{i} - \frac{2 \times 6t^{\frac{3}{2}}}{\frac{3}{2}}\mathbf{j} + C\mathbf{i} + D\mathbf{j}$

$$\mathbf{s} = t^3\mathbf{i} - 4t^{\frac{3}{2}}\mathbf{j} + C\mathbf{i} + D\mathbf{j}$$

when $t=4$ $\mathbf{s} = 64\mathbf{i} - 32\mathbf{j} + C\mathbf{i} + D\mathbf{j}$

$$1 = 64 + C \quad C = -63$$

$$-4 = -32 + D \quad D = 28$$

$$\mathbf{s} = (t^3 - 63)\mathbf{i} + (28 - 4t^{\frac{3}{2}})\mathbf{j}$$

when $t=1$

$$\mathbf{s} = -62\mathbf{j} + 24\mathbf{j} \text{ m}$$



2.

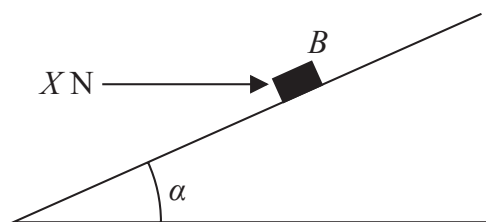


Figure 1

A rough plane is inclined to the horizontal at an angle α , where $\tan \alpha = \frac{3}{4}$

A small block B of mass 5 kg is held in equilibrium on the plane by a horizontal force of magnitude X newtons, as shown in Figure 1.

The force acts in a vertical plane which contains a line of greatest slope of the inclined plane.

The block B is modelled as a particle.

The magnitude of the normal reaction of the plane on B is 68.6 N .

Using the model,

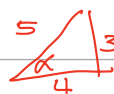
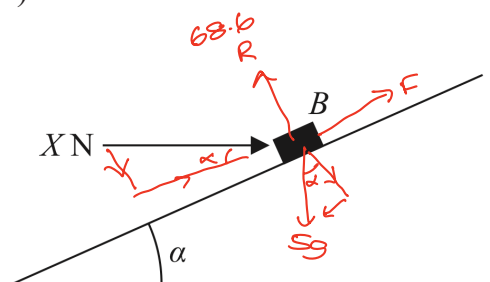
(a) (i) find the magnitude of the frictional force acting on B , (3)

(ii) state the direction of the frictional force acting on B . (1)

The horizontal force of magnitude X newtons is now removed and B moves down the plane.

Given that the coefficient of friction between B and the plane is 0.5

(b) find the acceleration of B down the plane. (6)



$$\uparrow 68.6 = \frac{X \cdot 3}{5} + \frac{5g \cdot 4}{5}$$

$$\rightarrow F + \frac{X \cdot 4}{5} = \frac{5g \cdot 3}{5} \quad \checkmark$$

$$\frac{3X}{5} = 68.6 - 4g$$

$$F = 3g - \frac{4X}{5}$$

$$X = \frac{343}{3} - \frac{20g}{3}$$

$$F = 3g - \frac{4}{5} (4g)$$

$$X = 49$$

$$F = -9.8$$

$\therefore F = 9.8 \text{ N}$ acting down the plane



DO NOT WRITE IN THIS AREA

DO NOT WRITE IN THIS AREA

DO NOT WRITE IN THIS AREA

Question 2 continued

$$\begin{aligned} F_{net} &= 5g \sin \alpha - F & R &= 5g \times \frac{4}{5} = 4g \\ &= 3g - 0.5R \\ &= 3g - 2g \\ &= g \end{aligned}$$

$$\begin{aligned} ma &= g & Sa &= g \\ & & a &= \frac{g}{1} \text{ ms}^{-2} \end{aligned}$$



Question 2 continued

Lined area for writing answers.

DO NOT WRITE IN THIS AREA

DO NOT WRITE IN THIS AREA

DO NOT WRITE IN THIS AREA



Question 2 continued

DO NOT WRITE IN THIS AREA

DO NOT WRITE IN THIS AREA

DO NOT WRITE IN THIS AREA

(Total for Question 2 is 10 marks)



3. [In this question, \mathbf{i} and \mathbf{j} are horizontal unit vectors.]

A particle P of mass 4 kg is at rest at the point A on a smooth horizontal plane.

At time $t = 0$, two forces, $\mathbf{F}_1 = (4\mathbf{i} - \mathbf{j})\text{N}$ and $\mathbf{F}_2 = (\lambda\mathbf{i} + \mu\mathbf{j})\text{N}$, where λ and μ are constants, are applied to P

Given that P moves in the direction of the vector $(3\mathbf{i} + \mathbf{j})$

(a) show that

$$\lambda - 3\mu + 7 = 0 \quad (4)$$

At time $t = 4$ seconds, P passes through the point B .

Given that $\lambda = 2$

(b) find the length of AB .

(5)

$$F_{\text{net}} = ma$$

$$a = \frac{4 + \lambda}{4} \mathbf{i} + \frac{\mu - 1}{4} \mathbf{j}$$

$$u = 0$$

$$v = 3x\mathbf{i} + x\mathbf{j}$$

$$t = t$$

$$3xt = \frac{4 + \lambda}{4} \quad xt = \frac{\mu - 1}{4}$$

$$12xt = 4 + \lambda$$

$$12xt = 3\mu - 3$$

$$4 + \lambda = 3\mu - 3$$

$$\lambda - 3\mu + 7 = 0$$

$$b) \quad \text{at } t = 4 \quad v = u + at \quad \text{if } \lambda = 2 \quad \mu = 3 \quad 2 - 3\mu + 7 = 9$$

$$v = 12x\mathbf{i} + 4x\mathbf{j}$$

$$a = \frac{6}{4}\mathbf{i} + \frac{2}{4}\mathbf{j} \quad \checkmark$$

$$v = u + at$$

$$12x = \frac{6}{4} \times 4 \quad x = 0.5$$

$$u = 0 \quad 0$$

$$s =$$

$$\text{so } v = 6\mathbf{i} + 2\mathbf{j}$$

$$s = \frac{1}{2}(u+v)t \quad t = 4$$

$$s = \frac{1}{2}(0 + 6\mathbf{i} + 2\mathbf{j}) \times 4 = 12\mathbf{i} + 4\mathbf{j}$$



Question 3 continued

$$\begin{aligned} \text{length } AB &= \sqrt{12^2 + 4^2} \\ &= \sqrt{160} \\ &= 4\sqrt{10} \text{ m} \end{aligned}$$

DO NOT WRITE IN THIS AREA

DO NOT WRITE IN THIS AREA

DO NOT WRITE IN THIS AREA



P 7 2 1 3 1 A 0 9 2 0

Question 3 continued

DO NOT WRITE IN THIS AREA

DO NOT WRITE IN THIS AREA

DO NOT WRITE IN THIS AREA

(Total for Question 3 is 9 marks)



P 7 2 1 3 1 A 0 1 1 2 0

4.

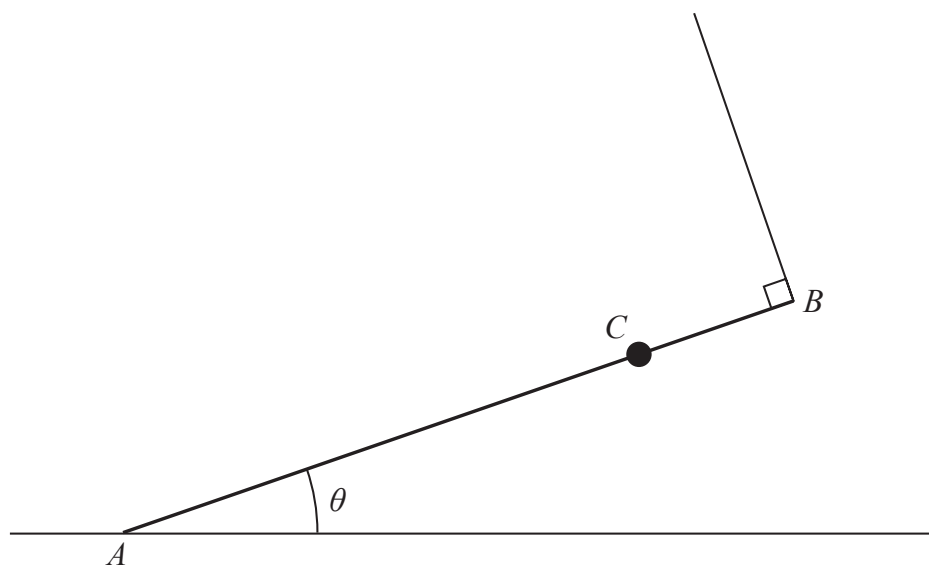


Figure 2

A uniform rod AB has mass M and length $2a$

A particle of mass $2M$ is attached to the rod at the point C , where $AC = 1.5a$

The rod rests with its end A on rough horizontal ground.

The rod is held in equilibrium at an angle θ to the ground by a light string that is attached to the end B of the rod.

The string is perpendicular to the rod, as shown in Figure 2.

- (a) Explain why the frictional force acting on the rod at A acts horizontally to the right on the diagram.

(1)

The tension in the string is T

- (b) Show that $T = 2Mg \cos \theta$

(3)

Given that $\cos \theta = \frac{3}{5}$

- (c) show that the magnitude of the vertical force exerted by the ground on the rod at A is $\frac{57Mg}{25}$

(3)

The coefficient of friction between the rod and the ground is μ

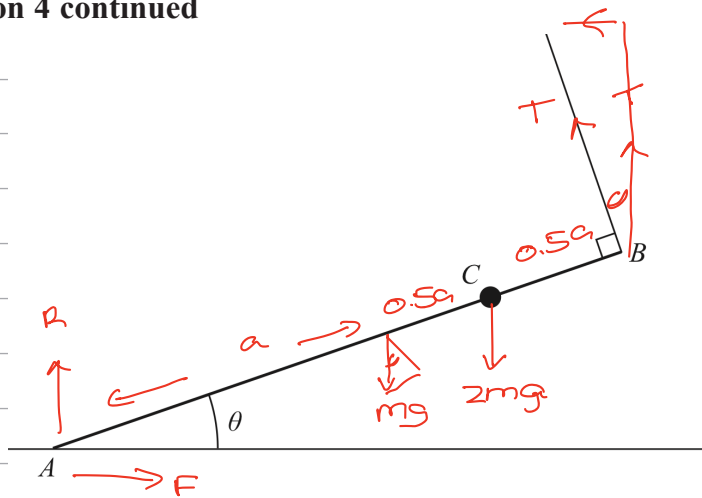
Given that the rod is in limiting equilibrium,

- (d) show that $\mu = \frac{8}{19}$

(4)



Question 4 continued



a) The horizontal component of T acts to the left and that is the only other horizontal force and the system is in equilibrium so F must \rightarrow

\uparrow

\rightarrow

$$R + T \cos \theta = 3mg$$

$$F = T \sin \theta$$

moments about A

$$mg \cos \theta a + 2mg \cos \theta \times \frac{3a}{2} = T 2a$$

$$4amg \cos \theta = T 2a$$

$$2mg \cos \theta = T$$

\uparrow

\rightarrow

$$R + T \cos \theta = 3mg$$

$$F = T \sin \theta$$

$$R + 2mg \frac{3}{5} \times \frac{3}{5} = 3mg$$

$$R + \frac{18}{25}mg = 3mg$$

$$R = \frac{57mg}{25}$$

$$F = \mu R$$

$$\mu \frac{57}{25}mg = T \frac{4}{5}$$

$$\mu \frac{57}{25}mg = 2mg \frac{3}{5} \times \frac{4}{5}$$

$$57\mu = 24$$

$$\mu = \frac{24}{57} = \frac{8}{19}$$



Question 4 continued

DO NOT WRITE IN THIS AREA

DO NOT WRITE IN THIS AREA

DO NOT WRITE IN THIS AREA



5.

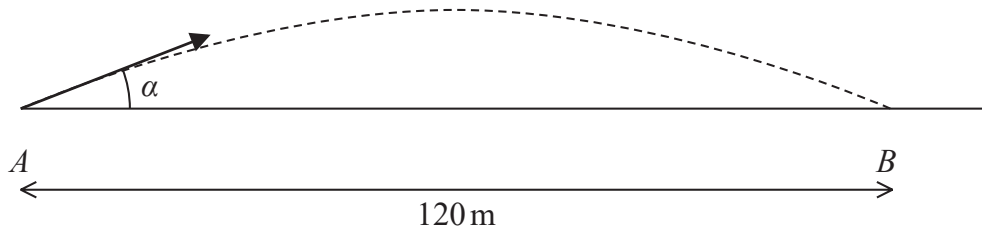


Figure 3

A golf ball is at rest at the point A on horizontal ground.

The ball is hit and initially moves at an angle α to the ground.

The ball first hits the ground at the point B , where $AB = 120$ m, as shown in Figure 3.

The motion of the ball is modelled as that of a particle, moving freely under gravity, whose initial speed is U m s⁻¹.

Using this model,

(a) show that $U^2 \sin \alpha \cos \alpha = 588$ (6)

The ball reaches a maximum height of 10 m above the ground.

(b) Show that $U^2 = 1960$ (4)

In a refinement to the model, the effect of air resistance is included.

The motion of the ball, from A to B , is now modelled as that of a particle whose initial speed is V m s⁻¹.

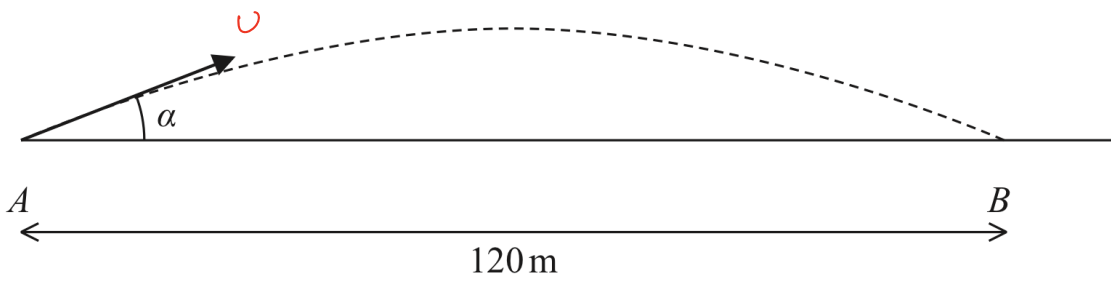
This refined model is used to calculate a value for V .

(c) State which is greater, U or V , giving a reason for your answer. (1)

(d) State one further refinement to the model that would make the model more realistic. (1)



Question 5 continued



DO NOT WRITE IN THIS AREA

DO NOT WRITE IN THIS AREA

DO NOT WRITE IN THIS AREA

→
 $s = 120$

$v = u \cos \alpha$

$v =$

$a = 0$

$t =$

↑
 $s = 0$

$v = u \sin \alpha$

$v =$

$a = -9.8$

$t = t$

$s = ut + \frac{1}{2}at^2$

$120 = u \cos \alpha t$

$\frac{120}{u \cos \alpha} = t$

$s = ut + \frac{1}{2}at^2$

$0 = u \sin \alpha \frac{120}{u \cos \alpha} - 4.9 \left(\frac{120}{u \cos \alpha} \right)^2$

$0 = u \sin \alpha \times 120 \times u \cos \alpha - 4.9(120)^2$

$0 = u^2 \sin \alpha \cos \alpha \times 120 - 70560$

$\frac{70560}{120} = u^2 \sin \alpha \cos \alpha$

$588 = u^2 \sin \alpha \cos \alpha$

When $v = 0$ $s = 10$

↑

$s = 10$

$v = u \sin \alpha$

$v = 0$

$a = -9.8$

t

$v^2 = u^2 + 2as$

$= u^2 \sin^2 \alpha - 19.6 \times 10$

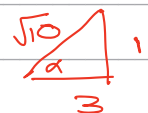
$196 = u^2 \sin^2 \alpha$

$\frac{196}{\sin^2 \alpha} = u^2$ now sub in equation

from part a

$588 = \frac{196 \sin \alpha \cos \alpha}{\sin^2} = \frac{196 \cos \alpha}{\sin \alpha}$

$\frac{588}{196} = \cot \alpha$ $\tan \alpha = \frac{196}{588} = \frac{1}{3}$



Question 5 continued

$$196 = U^2 \sin^2 \alpha$$

$$196 = U^2 \frac{1}{10}$$

$$1960 = U^2$$

c) v is greater as it now has to overcome air resistance to still reach the same destination

d) wind effects eg spin of the ball, dimensions of the ball could be taken into effect

DO NOT WRITE IN THIS AREA

DO NOT WRITE IN THIS AREA

DO NOT WRITE IN THIS AREA



Question 5 continued

DO NOT WRITE IN THIS AREA

DO NOT WRITE IN THIS AREA

DO NOT WRITE IN THIS AREA

Lined writing area for the response to Question 5.



Question 5 continued

Horizontal lines for writing answers.

(Total for Question 5 is 12 marks)

TOTAL FOR MECHANICS IS 50 MARKS

DO NOT WRITE IN THIS AREA

DO NOT WRITE IN THIS AREA

DO NOT WRITE IN THIS AREA

